

Bristol Slave Trade

- Transatlantic Slave Trade – 1501 - 1866. Over 12 million Africans exported.
- Merchant Edward Colston was involved.
- Profits from the slave trade contributed towards the cost of much of the building of Bristol's grand squares.
- Slavery was formally outlawed in British territories in 1834.
- Hannah More was an active slavery abolitionist.

Wangari Maathai

- Born 1940 and died 2011 in Kenya.
- Encouraged women of Kenya to plant tree nurseries.
- Established the *Green Belt Movement in Kenya*.
- Encouraged communities to take responsibility for their local area.



Ship Shape and Bristol Fashion – Year 5+6

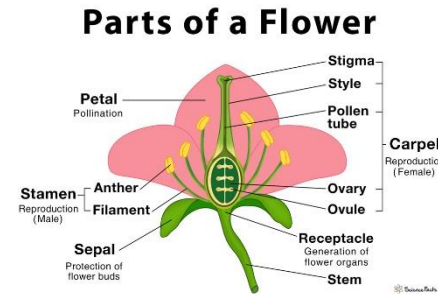


Changing Me

- Understand what changes happen during puberty.
- Understand human conception and pregnancy.
- Consider our own feelings about transition to secondary school.

Living things and habitats

- Animals can be grouped into vertebrates (and then further into fish, reptiles, amphibians, birds and mammals) and invertebrates
- Plant reproduction: The processes of dispersal, fertilisation and germination
- Plant have different parts with different features and functions.



- Reproduction is when an animal or plant produces one or more individuals similar to itself.
- Sexual reproduction: requires two parents with male and female gametes (cells) and will produce offspring that is similar to but not identical to the parent
- Asexual reproduction: will produce offspring that is identical to the parent and requires only one parent.

Vocabulary

Vertebrates – animals that have a backbone

Invertebrates – spineless animals

Dispersal – the spreading (of seeds) across a large area

Fertilisation– the union of reproductive cells to produce a new living thing.

Germination– the development of a plant after a dormant period

Primatologist - a person who studies primates.

Anthropologist- a person who studies human behaviour.

Abolitionist – a person who favours the banning of a particular practice or institution.

Jane Goodall

- Born in 1934.
- Primatologist and anthropologist.
- Studied chimpanzee family and social life.
- Challenged the belief that only humans could use tools.

